

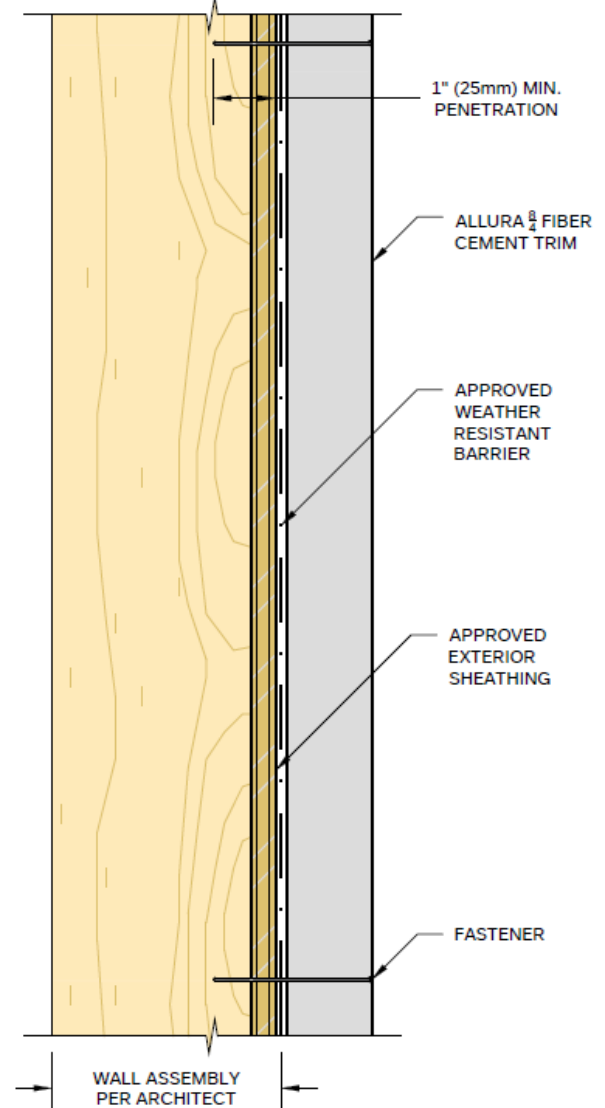
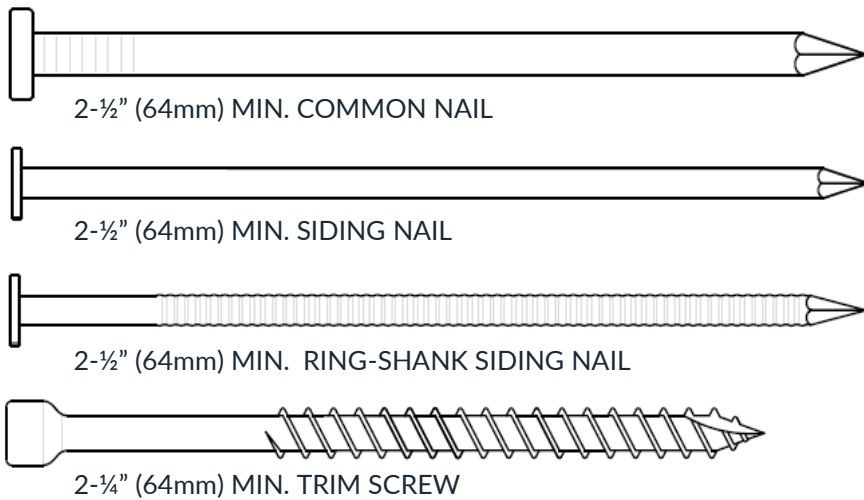


This technical bulletin is intended to be read in conjunction with the Allura Installation Manual dated October 2025. If a more current version of the Installation Manual or this technical bulletin is available, this version is no longer applicable.

This technical bulletin is a supplement to Section 4: Fastening Allura Products and Section 7: Allura Trim of the Allura Installation Manual dated October 2025. It is intended only for the 8/4 Allura Fiber-Cement Trim. Only those items specifically mentioned in this technical bulletin shall supersede the Installation Manual.

PRODUCT SPECIFICATIONS

PRODUCT	NOMINAL THICKNESS	ACTUAL THICKNESS	NOMINAL WIDTH	ACTUAL WIDTH	LENGTH
8/4X4	2" (51mm)	1-½" (38mm)	4" (102mm)	3-½" (89mm)	12' (3,657mm)
8/4X6	2" (51mm)	1-½" (38mm)	6" (152mm)	5-½" (140mm)	12' (3,657mm)



TYPICAL ASSEMBLY

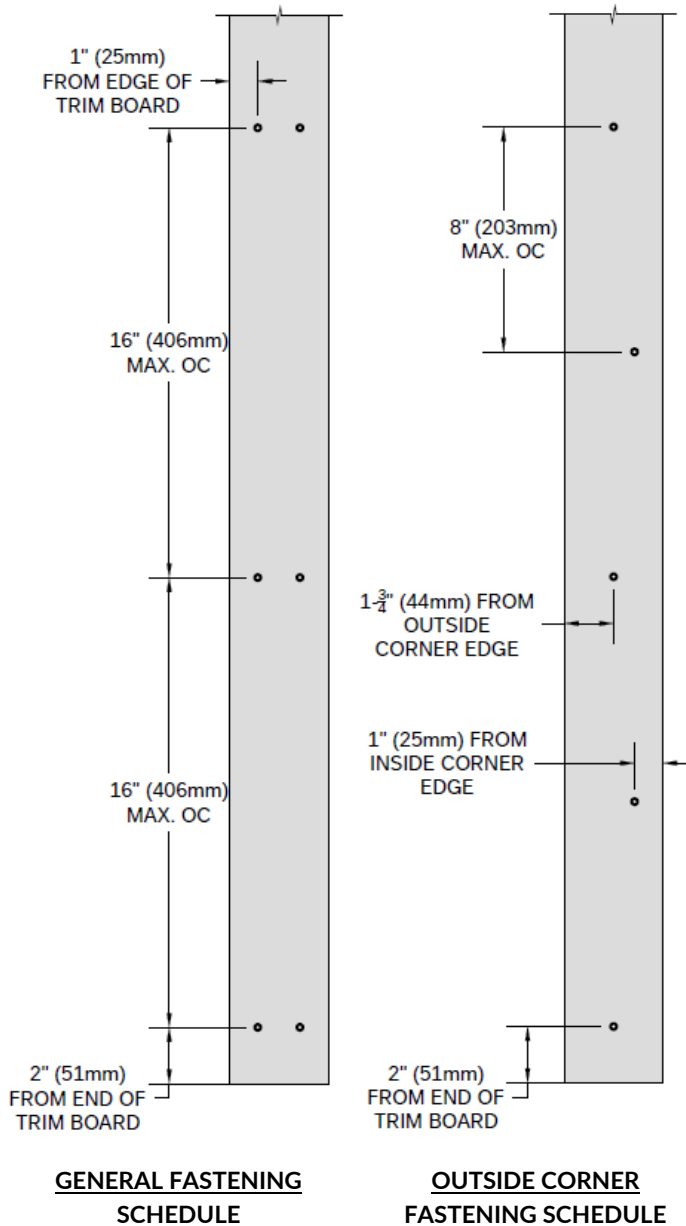
FASTENER SELECTION

- All fasteners must be corrosion-resistant, hot-dipped galvanized, or stainless steel. Allura is not responsible for the corrosion resistance of fasteners.
- Nails must penetrate at least 1-inch (25mm) into structural wood framing. The minimum penetration may include the thickness of structural wood sheathing (7/16 OSB or ½ plywood).
- Screws must penetrate at least ¾-inch (19mm) into structural wood framing. The minimum penetration may include the thickness of structural wood sheathing (7/16 OSB or ½ plywood).
- If attaching into steel framing, self-tapping screws must penetrate a minimum of ¼-inch (6.4mm) or three threads (whichever is greater) into metal framing.

Fasteners shown are intended as an example of minimum dimensions. Additional fasteners may be used so long as they meet the minimum requirements outlined above and in the Allura Installation Manual.

This Technical Bulletin is provided for informational purposes and intended as a guideline and is not intended to be a warranty or promise as to product performance. Please refer to Allura's applicable written installation instructions and Limited Warranties for more information. Please comply with applicable building codes effective in the city, state, or town where the installation is occurring. In the event there are discrepancies between Allura's installation instruction and applicable building code, adhere to the requirement that is more stringent. Failure to do so may violate laws, affect product performance, result in personal injury, and may affect warranty coverage. Compliance with local building codes, regulations, and standards is the responsibility of the installer. Any information or assistance provided by Allura in relation to specific projects must be approved by the relevant specialists engaged for the project eg. builder, architect, or engineer.





GENERAL FASTENING SCHEDULE

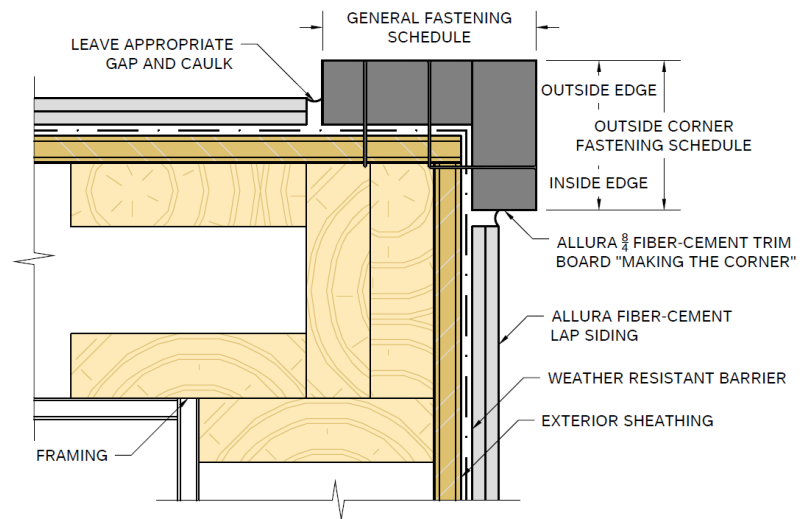
Applicable for 8/4X4 and 8/4X6 Allura Fiber-Cement Trim.

- Position fasteners 1-inch (25mm) from side edge of trim board.
- Position fasteners 2-inches (51mm) from end of trim board.
- Space fasteners no more than 16-inches (406mm) apart on center.

OUTSIDE CORNER FASTENING SCHEDULE

To avoid driving the fastener into the adjacent trim, the trim board “making the corner” or the board overlapping the adjacent board has a modified fastening schedule. Applicable for 8/4X4 and 8/4X6 Allura Fiber-Cement Trim.

- Position fasteners 1-inch (25mm) from the inside corner edge of trim board.
- Position fastener 1 3/4-inch (44mm) from the outside corner edge of trim board.
- Position fasteners 2-inches (51mm) from end of trim board.
- Space fasteners no more than 8-inches (203mm) apart on center alternating between the inside and outside corner.



ADDITIONAL INFORMATION

For additional resources, including our most current installation instructions and code reports, please visit our website at www.allurausa.com. For technical services email technical.services@elementia.com or call 844.4.ALLURA.

This Technical Bulletin is provided for informational purposes and intended as a guideline and is not intended to be a warranty or promise as to product performance. Please refer to Allura's applicable written installation instructions and Limited Warranties for more information. Please comply with applicable building codes effective in the city, state, or town where the installation is occurring. In the event there are discrepancies between Allura's installation instruction and applicable building code, adhere to the requirement that is more stringent. Failure to do so may violate laws, affect product performance, result in personal injury, and may affect warranty coverage. Compliance with local building codes, regulations, and standards is the responsibility of the installer. Any information or assistance provided by Allura in relation to specific projects must be approved by the relevant specialists engaged for the project eg, builder, architect, or engineer.

