



This technical bulletin is intended to be read in conjunction with the Allura Installation Manual dated October 2025. If a more current version of the Installation Manual or this technical bulletin is available, this version is no longer applicable.

This technical bulletin is a supplement to Section 5: Clearances & Flashing of the Allura Installation Manual dated October 2025. Only those items specifically mentioned in this technical bulletin shall supersede the Installation Manual. Follow all other requirements outlined in the Installation Manual.

### REQUIREMENTS

Create a minimum ¼-inch (6.4mm) clearance between Allura fiber-cement siding and the base flashing on hardscapes (decks, patios, etc.) if installed in a sheltered or covered area. A sheltered area is:

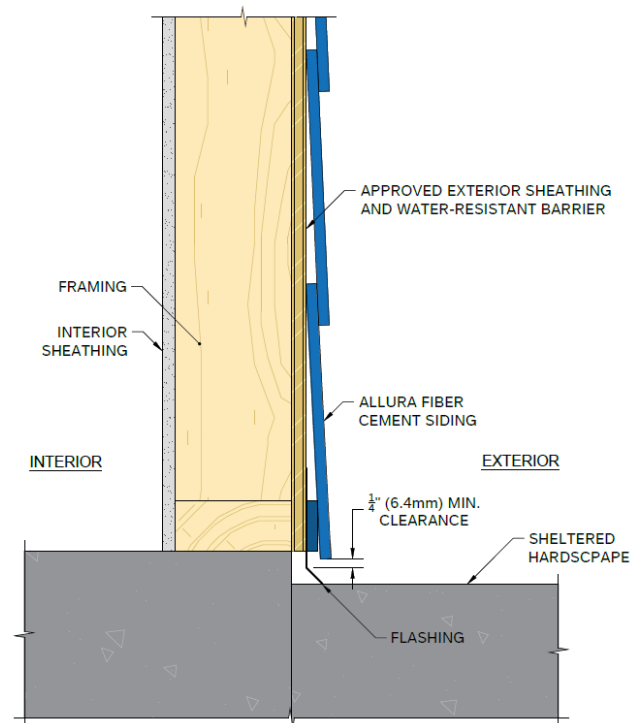
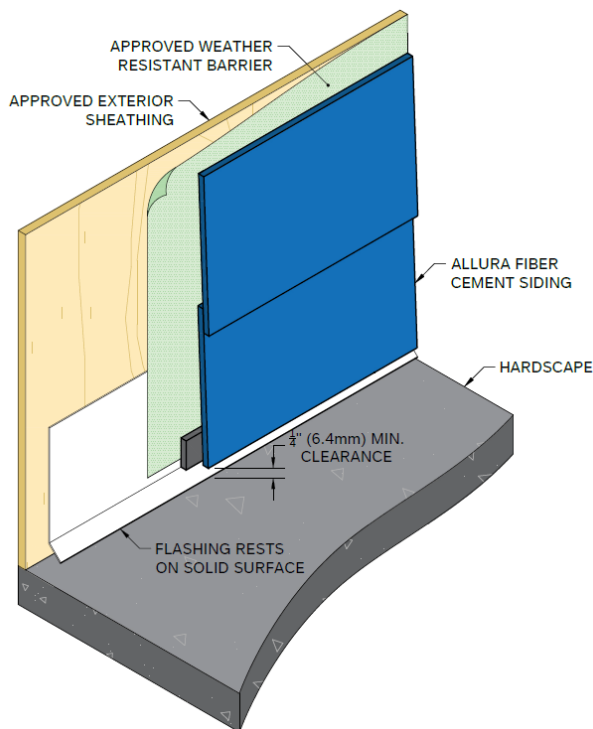
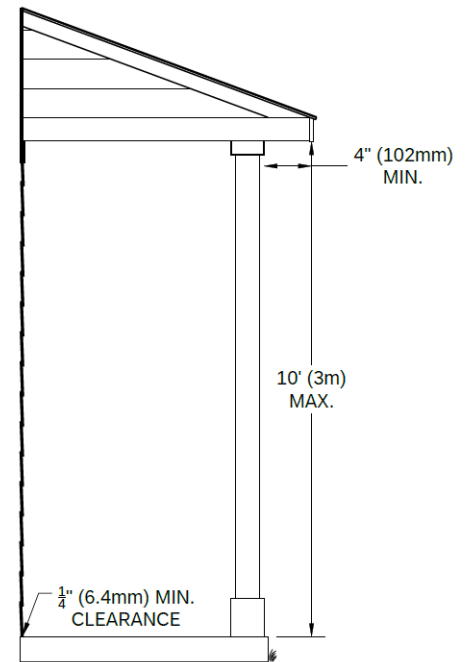
- Less than 10-feet (3m) below a roof overhang, or eave, and  
The eave or roof overhang is greater than 4-inches (102mm) from the outside edge of the Allura fiber-cement siding

**Note: DO NOT install Allura fiber-cement siding and trim where they may remain in contact with standing water. Ensure hardscapes slope away from the siding and trim.**

**Note: DO NOT allow dirt, debris, or deleterious material, including snow and ice, to accumulate against the siding and/or flashing.**

If installing with a clearance less than 1-inch (25mm), install a base flashing in conjunction with the water resistant barrier per code. Ensure the base flashing rests on a solid surface.

**Note: DO NOT caulk the horizontal transition at the z-flashing and/or base flashing.**



This Technical Bulletin is provided for informational purposes and intended as a guideline and is not intended to be a warranty or promise as to product performance. Please refer to Allura's applicable written installation instructions and Limited Warranties for more information. Please comply with applicable building codes effective in the city, state, or town where the installation is occurring. In the event there are discrepancies between Allura's installation instruction and applicable building code, adhere to the requirement that is more stringent. Failure to do so may violate laws, affect product performance, result in personal injury, and may affect warranty coverage. Compliance with local building codes, regulations, and standards is the responsibility of the installer. Any information or assistance provided by Allura in relation to specific projects must be approved by the relevant specialists engaged for the project eg. builder, architect, or engineer.

